



Annual Report of the President  
2018-2019

Dr. Dwight J. Fennell



# Annual Report of the President 2018-2019

Dr. Dwight J. Fennell



## TABLE OF CONTENTS

The President’s Pen	i
Historic Martin Hall	ii
Board of Trustee Members 2018-2019	iii
Texas College: Historical Overview	iv
Mission-Statement-Institutional Vision and Core Values	v
Institutional Accreditation, Approvals/Authorizations and Memberships	vi
<b>INSTITUTIONAL FACTS</b>	<b>1-2</b>
Enrollment Overview	3
Enrollment by State	3
Total Enrollment	4
Enrollment by Ethnicity	5
Enrollment by Gender	6
Scholarships and Grants	7
<b>UNCF/HBCU Economic Impact Study</b>	<b>8-9</b>
Economic Impact —Texas College	8
Economic Impact —HBCUs in Texas	9
<b>INSTITUTIONAL HIGHLIGHTS</b>	<b>10-11</b>
<b>LEGACY</b>	<b>10</b>
Honda All-Star Challenge	10
Educational Preparation Program Accreditation	11
Religious Emphasis Week	11
Renovation Update: Historic Martin Hall	11
<b>FRIENDS OF THE COLLEGE</b>	<b>12-13</b>

## The President's Pen



Dear Alumni and Friends of Texas College:

It is a pleasure to provide you with an overview of the status of Texas College for the period 2018-2019. This has proven to be an exceptional year as the administration has operated with the theme, “Planning with Purpose and Collaboration to Ensure a Bright Future.” The operational dynamics of the theme has assisted in numerous ways.

This year was also significant as the College began the celebration of its 125th anniversary. The history of the College records her founding as January 9, 1894 by a group of ministers with the Christian Methodist Episcopal Church. The founding represented the start of an educational institution for a disenfranchised people (and others) in the area of East Texas and the City of Tyler. The Charter as issued by the State of Texas in 1907 notes “...the name of the corporation would be Texas College, with the purpose of delivering education that focuses on all branches of literary, scientific and classical education, wherein [all] shall be taught theology, normal training of teachers, music, commercial and industrial training, and agricultural and mechanical sciences. The college as founded was designed as a coed institution that would educate both males and females regardless of age or religious preference.”

Texas College today complies with its founding principles. Moreover, the college remains open to all individuals without discrimination on the grounds of national origin, race, religion, or sex, with the offering of instruction in the areas of Arts and Sciences, Humanities, Natural Sciences, Business and Social Sciences, and Teacher Preparation. Further, Texas College operates in keeping with the standards and practices of higher education as determined by the Southern Association of College and Schools Commission on Colleges (SACSCOC) and requisites of the Department of Education.

It should be noted that it is also because of your support and prayers that the College has experienced many successful accomplishments. Such success has included a year of enrollment growth, endowment increase, fiscal strength, and enhancements to the physical plant. The information herein is provided to share such results; however, perhaps the greatest success has been the College's fulfillment of her 125<sup>th</sup> anniversary during this period.

Thank each of you for your contributions to Texas College. We look to your continued support as we “plan and collaborate,” for the continuation of her future. I hope you will enjoy this report.

Sincerely,

Dwight J. Fennell, Ph.D.  
President



*Martin Hall*  
*Erected 1924*  
*Smith County Historic Registry, 2007*



*Martin Hall*  
*Renovated 2019*

# Board of Trustees Members 2018-2019

Lawrence L. Reddick, III, Chair

Billye Suber Aaron

Kenneth Bentley

Bobby Best

Bridget Chisholm

Gwendolyn Collins

Carmichael Crutchfield

Robert Evans

Vince Gonzales

Robert Hatchett

Charles Hill

Leon McCowan

Timothy H. McKay

Patricia McKenzie

Clifton Roberson

Annie Grace Robinson

Hirsch A. Serman

Sarah D. Wilborn

## Historical Overview

In the Spring of 1894, Texas College was found by a group of ministers from the Christian Methodist Episcopal Church. The founding represented the start of the educational process for a group of disenfranchised individuals in the area of east Texas, City of Tyler.

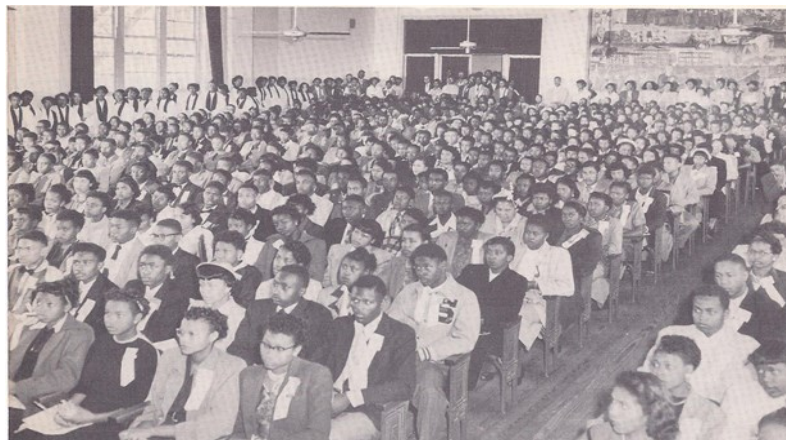
The Charter as originally issued July 1, 1907, indicates that the name of the corporation was established as "Texas College, "with the purpose of an educational institution designed to operate under the supervision care and ownership of the Christian Methodist Episcopal Church in America. The exclusive educational direction was to include the education of youths, male and female, in all branches of a literary, scientific and classical education wherein [all] shall be taught theology, normal training of teachers, music, commercial and industrial training , and agricultural and mechanical sciences.

On June 12, 1909, the name of the college was changed from Texas College to Phillips University. The noted change was associated with Bishop Henry Phillips, as a result of his leadership and educational interests for mankind. The name change was short lived and reportedly lasted until actions for a name reversal occurred in 1910 at the Third Annual Conference of the church. On May 1912 the college was officially renamed Texas College.

The subsequent years of the College were spent with refinements and enhancements of the educational enterprise. The Articles of Incorporation reflect such efforts with modifications and amendments during periods 1909 to 1966.

The College today complies with its founding principles in that she remains open to all individuals without discrimination on the grounds of national origin, race, religion, or sex ... with the right to offer instruction in the areas of Arts and Sciences, Humanities, Natural Sciences, Social Sciences preparation of teachers and the provision of instructional supports, to those in pursuit of an education.

(Note: Information provided by Secretary of State Charter - July 10,1907; Amendment -July 24, 1909; Amendment - March 14, 1918, Amendment - November 26, 1957; Statement - September 26, 1963; Statement of Change of Registered Agent - August 15, 1966 and Amendment - August 19, 1966.)



## Mission Statement

Texas College is a historically black college founded in 1894, by a group of CME ministers. Our mission, which continues to embody the principles of the Christian Methodist Episcopal church, is *to ensure that the student body experiences balanced intellectual, psychological, social and spiritual development, aimed at enabling them to become active productive members of society where they live and work.*

## Institutional Vision

The vision of Texas College is to establish within her, an environment that embraces a *culture of learning*. Such a culture addresses the teaching and learning process that under girds academics, athletics, services and supports that are beneficial to our students, the broader community, and our stakeholders at-large. The vision embraces professionals who are: 1) integral to the academic preparation of students; 2) deliberate in teaching (and learning) that leads to content maturation and personal development of learners; and 3) passionate about the skill development and readiness of students for entry into the job market and/or graduate school.

The culture of learning also embraces the raising of standards and expectations of academic delivery, while also demonstrating values, morals and spiritual development that enhances life. The culture of learning encompasses the address of mechanisms and supports for retention, of both our students (who desire an education) and our professional family, who give of themselves.

The vision of Texas College represents a commitment to working and interacting with groups, organizations and communities. This interaction can assist with enriching the further development of our students, staff and faculty; while also contributing to the enrichment of the community. Simply stated, the vision of Texas College is to *Enhance the Culture of Learning,*" for the benefit of a better society.

## Core Values

**Academic Excellence** - Developing a culture of curiosity and creativity that will challenge the frontiers of teaching/learning; stimulate research; raise the level of analytical reasoning and inquiry; and enable students to acquire leadership, human relations, communication, and technology skills.

**Integrity** - Instilling the pursuit of character, honesty, and sincerity of purpose as the moral rubrics upon which the behaviors of our graduates and College family are anchored.

**Perseverance** - Implanting diligence, enterprise, and pride in the application of skills, knowledge, and abilities developed during the course of study at Texas College, Social Responsibility - promoting in the College community a conscious awareness that we are all stewards of the resources entrusted to our care.

**Social Responsibility** - Promoting in the College community a conscious awareness that we are all stewards of the resources entrusted to our care.

**Tolerance** - Emphasizing openness to divergent points of view, applying an eclectic approach to rational and analytical thinking.

**Community Service** - Encouraging self-extension in service to others as the heart and soul of our educational enterprise.



# Institutional Accreditation, Institutional Approvals/Authorizations and Memberships



## Accreditation

Texas College is accredited by the Southern Association of Colleges and Schools Commission on Colleges to award Associate and Baccalaureate Degrees. Contact the Commission on Colleges at 1866 Southern Lane, Decatur, Georgia 30033-4097 or call 404-679-4500 for questions about the accreditation of Texas College.

## Institutional Approvals

Texas College is listed with and approved by the Texas Education Agency and the Texas Higher Education Coordinating Board to offer select licensure programs for Teacher Education. Texas College is approved for the training of veterans as prescribed by the Veterans Administration Office. Texas College is approved by the Texas Workforce Commission as a training site.

## Institutional Authorizations

Texas College is authorized by the U.S. Immigration and Customs Enforcement (ICE) Agency to admit non-immigrant international students.

## Institutional Memberships

- American Association of Collegiate Registrars and Admission Officers
- Council for Higher Education
- Council of Independent Colleges
- Independent Colleges and Universities of Texas
- National Association of Deans, Registrars and Admission Officers
- National Association For Equal Opportunity in Higher Education
- National Association of Independent Colleges and Universities
- National Association of Intercollegiate Athletics
- Red River Athletic Conference
- Sooner Athletic Conference
- Texas Association of Developing Colleges
- UNCF



# Institutional Facts

# Texas College

## Institutional Facts

**Board Chairman:** Senior Bishop Lawrence L. Reddick, III - Presiding Prelate of the Eighth Episcopal District of the Christian Methodist Episcopal Church. Dallas, Texas.

**Institutional Founding and Affiliation:** The College was founded by the Christian Methodist Episcopal (CME) Church, January 9, 1894.

**Institutional Founding and Affiliation:** The College was founded by the Christian Methodist Episcopal (CME) Church, January 9, 1894.

**Motto:** “Give the People Light and They Will Find Their Way”

**Institutional Type:** Texas College is Liberal Arts, coed institution that is recognized as a Historically Black College University (HBCU). The designation of “HBCU” was determined by federal recognition that all colleges and universities that were established before the Civil Rights Act of 1964, with the specific purpose of serving the African-Americans would be acknowledged as such. Pursuant to the latest demographics, there are 101 HBCUs in the United States as public and private institutions. The current data reflects the discontinuation of some, as it is down from the 121 institutions that existed during the 1930s. Of the remaining HBCUs, 27 offer doctoral programs, 52 offer master's level programs, 83 offer the bachelor's degree and 38 offer associate degrees.

**Charter Designation/Incorporation:** The State of Texas in 1907, chartered Texas College as a religious and educational non-profit organization with the purpose [abbreviated] ... “to found and operate a college under the supervision, care and ownership of the Colored Methodist Episcopal Church in America for the education of youth, male and female, in all branches of a literary, scientific and classical education wherein shall be taught also theology, normal training of Teachers, music, commercial and industrial training, and the agricultural and mechanical sciences ... and the right to establish and confer degrees and grant diplomas.” The charter has been amended seven times since the original establishment of it.

**Operating Authority:** Texas College is fully accredited by the regional accrediting body, Southern Association of Colleges and Schools (SACSCOC), to offer the Associate of Arts degree, as well as the Bachelor of Arts and Bachelor of Science degrees. The College also has specific program accreditation with the Texas Education Agency (TEA) to offer the Educational Preparation Program (EPP) leading to licensure preparation in teaching.

**Student/Teacher Ratio:** The student-teacher ratio is 29:1.



# Institutional Facts

(continued)

**Academic Offerings:** Texas College has a total of 14 degree programs; 2 programs lead to the Associate of Arts degrees and 12 programs lead to baccalaureate offerings in the Bachelor of Arts and bachelor of Sciences. The associate offerings are: General Studies and Early Childhood Education. The Baccalaureate offerings include: Biology, Business Administration, Computer Science, Criminal Justice, English, Interdisciplinary Studies (Education), Mathematics, Music, Religion, Social Work and Sociology.

**Academic Partnerships:** Texas College has partnerships with various institutions. There are two partnerships with the University of Texas at Tyler that include the 4+1 (leading to graduate level degrees in business administration and/or engineering, with possible scholarship opportunities); and the 2+2 (i.e., a reciprocity initiative with transfer opportunities for the bachelors' degree). Partnerships also exist with the Dallas County Community College District (DCCCD) among all seven institutions, as well as with the University of Texas Health East Texas (Pre-Health Academy). Further, the college has an agreement with Tyler Junior College (TJC) that allow for student transfers.

**Strategic Direction of the College:** Texas College engages in annual assessments and on-going planning. The planning process involves “shared governance,” with the embrace of unit goals and student learning outcomes. The strategic direction for 2018-2023 includes work towards the following priority initiatives: 1) Improving Enrollment Management and Retention; 2) Establishing Academic Centers of Excellence; 3) Providing and Maintaining Comprehensive Technology; 4) Addressing Institutional Effectiveness; and 5) Addressing and Sustaining Financial Accountability.

**Athletics:** Texas College is a member of the National Association of Intercollegiate Athletics (NAIA), Division I, and with football is affiliated with the Sooner Athletic Conference (SAC), NAIA Division I. The College participates in intercollegiate athletic competition in: Baseball; Men and Women’s Basketball; Football; Men and Women’s Soccer; men and Women’s Cross Country; Softball; Men and Women’s Track and Field and Volleyball.



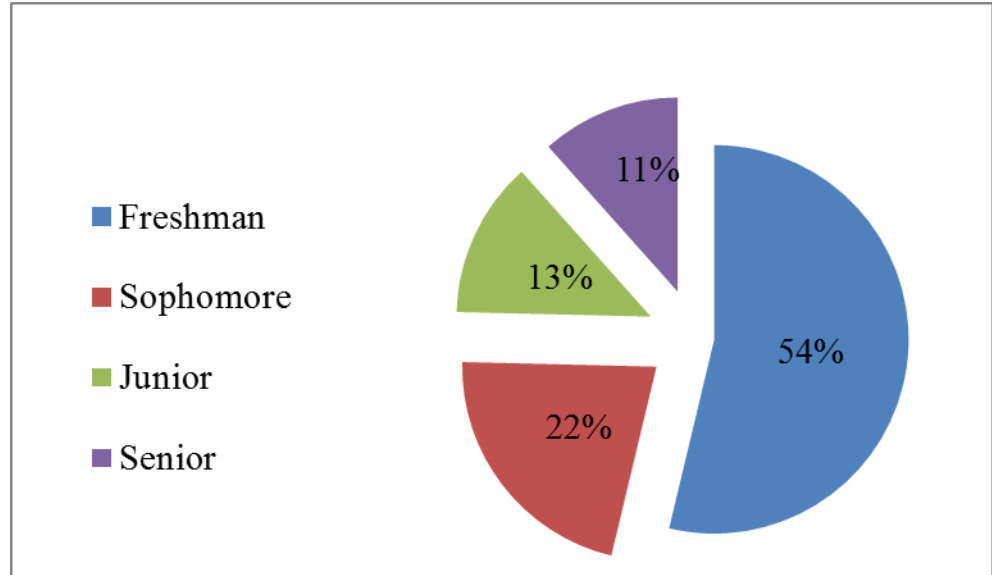
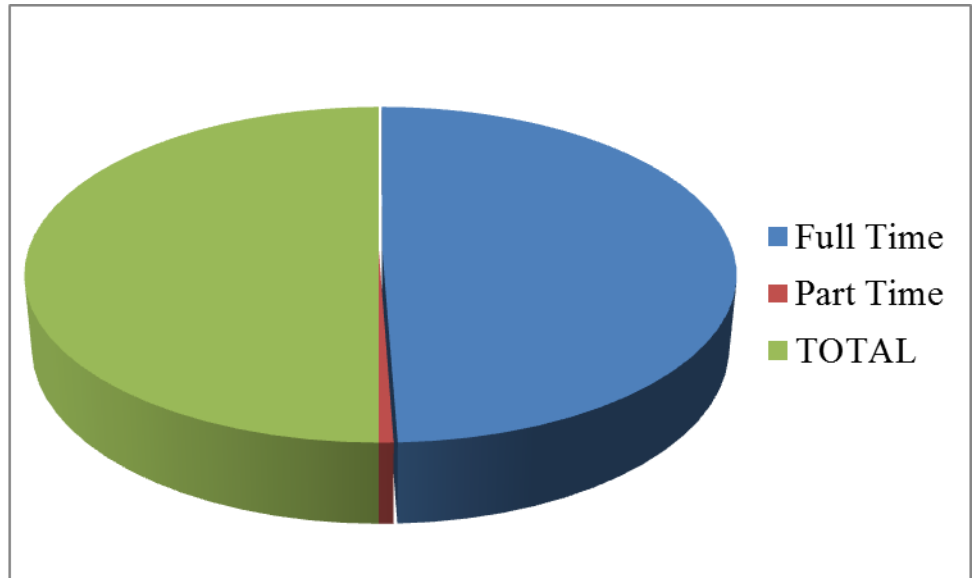
# Enrollment Overview

## Enrollment by State

<b>Alabama</b>	<b>3</b>
<b>Arkansas</b>	<b>3</b>
<b>Arizona</b>	<b>1</b>
<b>California</b>	<b>15</b>
<b>Colorado</b>	<b>1</b>
<b>Florida</b>	<b>11</b>
<b>Georgia</b>	<b>8</b>
<b>Illinois</b>	<b>5</b>
<b>Indiana</b>	<b>1</b>
<b>Kentucky</b>	<b>1</b>
<b>Louisiana</b>	<b>48</b>
<b>Maryland</b>	<b>1</b>
<b>Michigan</b>	<b>4</b>
<b>Missouri</b>	<b>2</b>
<b>Mississippi</b>	<b>3</b>
<b>Nebraska</b>	<b>1</b>
<b>New Mexico</b>	<b>1</b>
<b>North Carolina</b>	<b>1</b>
<b>Oklahoma</b>	<b>6</b>
<b>Pennsylvania</b>	<b>1</b>
<b>Puerto Rico</b>	<b>5</b>
<b>Tennessee</b>	<b>6</b>
<b>Texas</b>	<b>908</b>
<b>Wisconsin</b>	<b>3</b>
<b>International</b>	<b>5</b>
<b>TOTAL</b>	<b>1044</b>

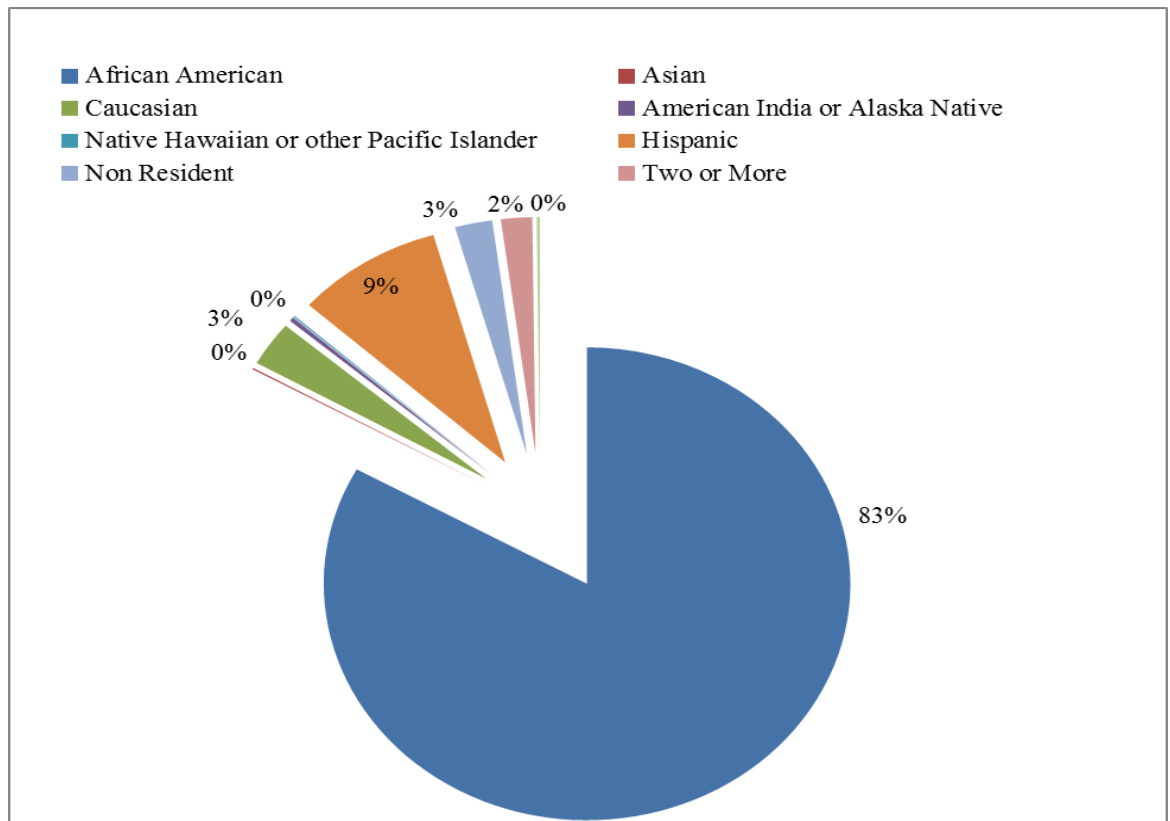
# Total Enrollment

N= 1044  
FTE =1039



## Enrollment by Ethnicity

African American	867
Asian	1
Caucasian	32
American India or Alaska Native	3
Native Hawaiian or other Pacific Islander	1
Hispanic	94
Non Resident	24
Two or More	20
Unknown	2
Total	<u>1,044</u>



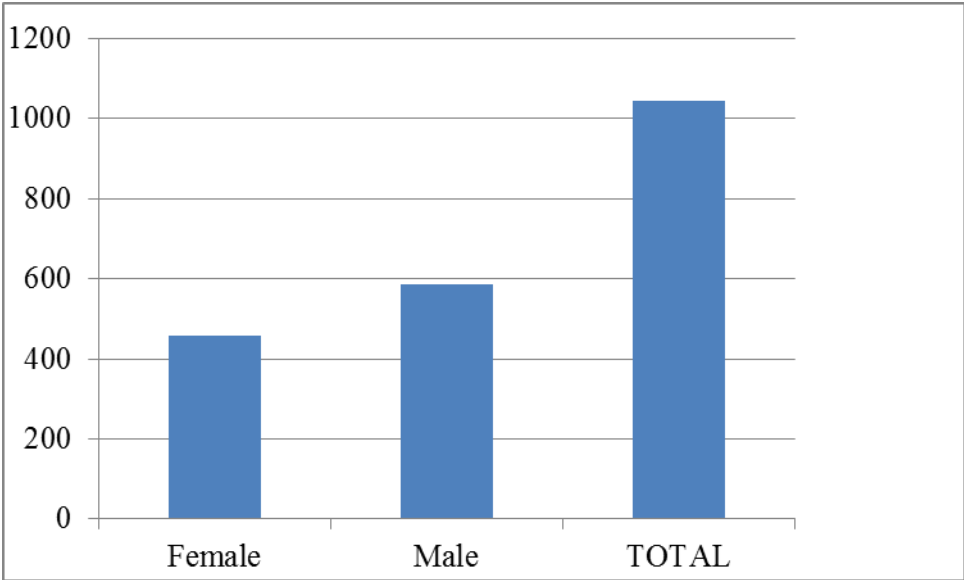
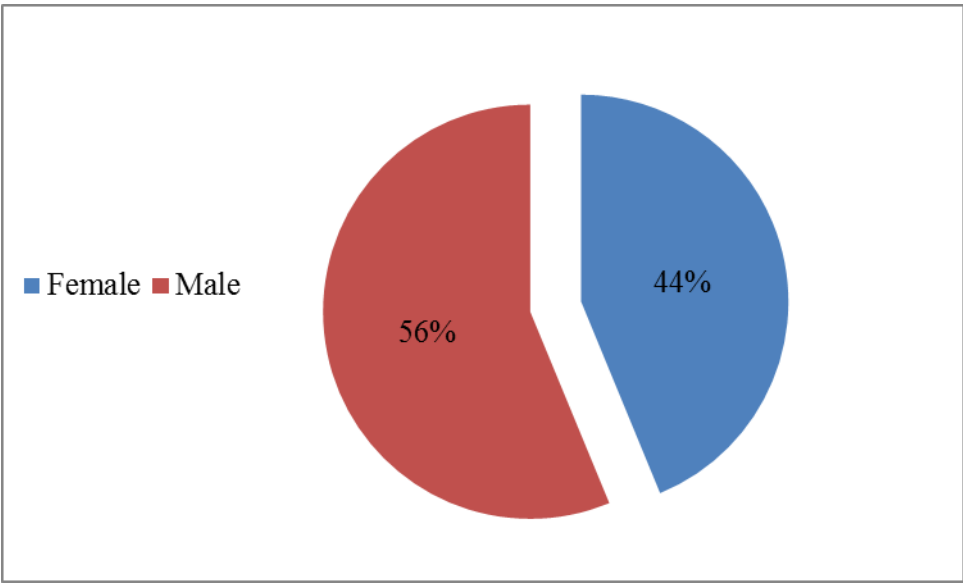


# Enrollment by Gender

Females: 457 (44%)

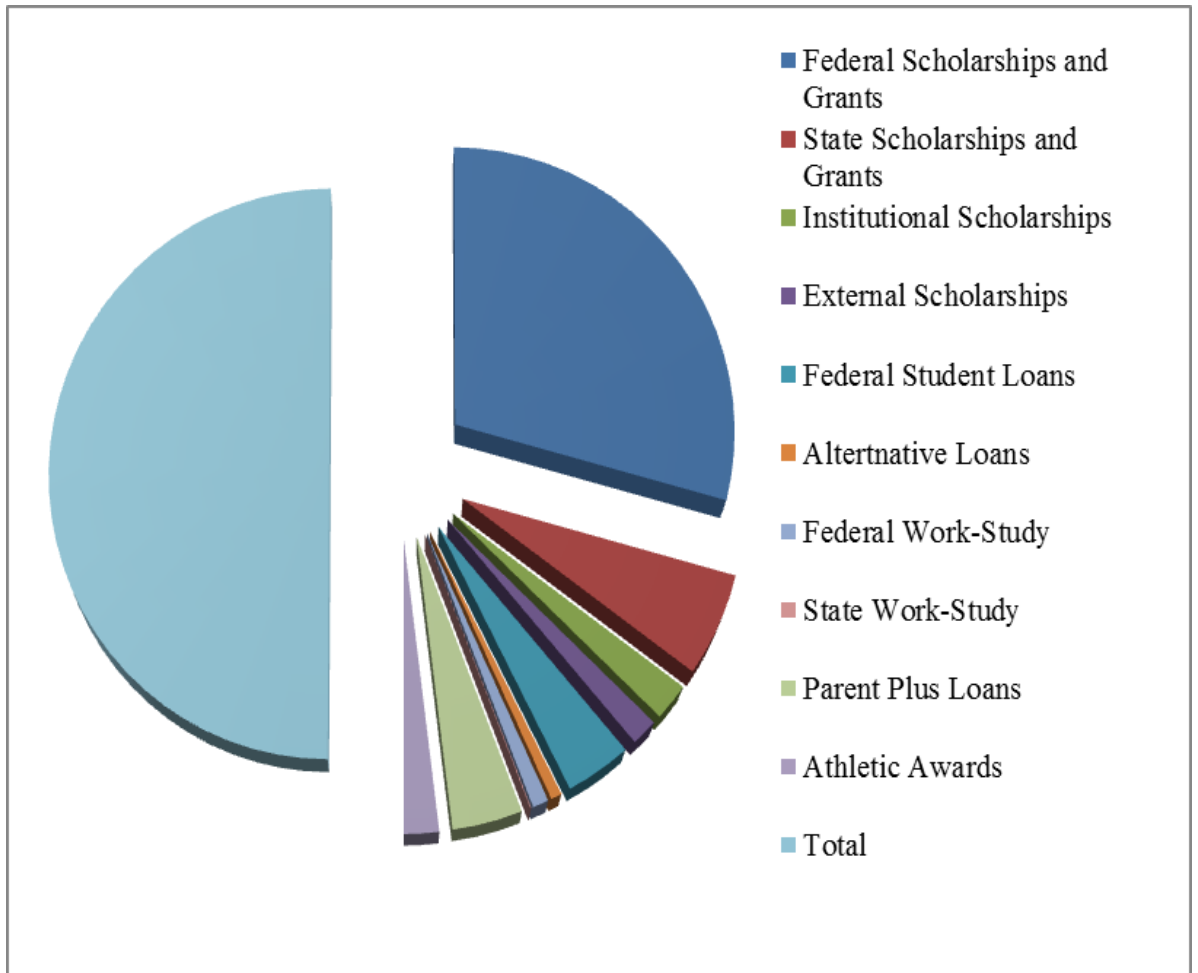
Males: 587 (56%)

Total: 1044



# Scholarships and Grants

	Amounts
Federal Scholarships and Grants	\$ 5,958,495.00
State Scholarships and Grants	11,904.95
Institutional Scholarships	4,247.23
External Scholarships	3,082.92
Federal Student Loans	764,231.50
Alternative Loans	1,268.90
Federal Work-Study	1,837.46
State Work-Study	9,430.00
Parent Plus Loans	8,064.08
Athletic Awards	4,002.18
 Total	 \$ 10,172,928.50



# Economic Impact Study





# Institutional Highlights

## Institutional Highlights

The 2018-2019 school year was filled with a number of events and activities that proved meaningful to the students, faculty and staff as well as meaningful in keeping with the mission of the College. Following are a few of the salient events.

**LEGACY Fundraiser:** The LEGACY Fundraiser continued as a major “annual fund” initiative by the College. LEGACY, a “black-tie” event was orchestrated to raise scholarship funds for deserving students. The occasion honors students across all disciplines selected by a Scholarship Committee, with financial awards made to each student covering his/her tuition and fees; and other academic costs. To-date scholarships have been made to more than 40 students with average awards being \$3,000. The fund is also endowed with earnings of more than \$250,000. Additionally, the LEGACY event honors professional persons and/or organizations that have been contributing entities to the Tyler and East Texas Region. The “2019 LEGACY Class of Honorees” consisted of educational leaders from the City of Tyler and nearby communities. The *Honoree Class* included a group of distinguished educators as follows:

<b>Dr. Kirk A. Calhoun:</b> President, UT Health Science Center at Tyler and Chairman of the Board, UT Health East Texas
--

<b>Dr. Willie C. Champion:</b> Assistant to the President, Texas College
--

<b>Dr. Marty Crawford:</b> Superintendent of Schools, Tyler Independent School District
---

<b>Dr. L. Michael Metke:</b> Chancellor and Chief Executive Officer, Tyler, Junior College
--

<b>Dr. Lester C. Newman:</b> President/CEO, Jarvis Christian College
--

<b>Dr. Michael Tidwell:</b> President, The University of Texas at Tyler
---

**Honda All-Star Challenge:** The *Honda All-Star Challenge* is an academic competition of student teams from Historically Black Colleges and Universities (HBCUs) from across the nation. The participation in the California-based competition is by invitation only, from the Honda Campus All-Star Challenge Committee. Texas College has participated in the competition for the past seven years consecutively and has performed very well by qualifying to compete at the national level. Over the seven-year period the College has received \$21,000 for participating.



# Institutional Highlights

**Educational Preparation Program (EPP):** Texas College is pleased to again report that the Division of Education has met accreditation requirements for the state’s Educational Preparation Program. (EPP) . The program leads to licensure in educational teaching fields of study. For Texas College, the program addresses 8 content areas for which graduates may pursue as a “career pathway,” with competitive earnings and/or enter a graduate program of study.

**Texas College: Religious Emphasis Week:** Texas College, as a “faith-based” institution, celebrates annually *Religious Emphasis Week*. The week-long activity allows the College to address the “spiritual development,” aspect of the Mission Statement, while also introducing and exposing students to the historical context of how the institution was found and sustained. Further, the week-long allows for students to learn about the goodness of God and His contributions to mankind. This year was especially significant as the College celebrated a major milestone with her 125<sup>th</sup> anniversary. Religious Emphasis Week is planned by the Campus Minister, who with a student team, has speakers, community guests and members from the CME Church attend and participate. Religious Emphasis Week, was February 17-20, 2019; the guest speaker was Rev. Freeman Mc Kendra II, Director of the First Year Experience and Lead Chaplain at Lane College, Jackson, TN.

**Historic Martin Hall:** Martin Hall (Administration Building) is registered as an historic site with the State of Texas. The facility was constructed in 1924 as a classroom building/lecture hall and gained its recognition for being named after Bishop J.C. Martin. It is recorded that under Bishop Martin and President W. R.. Banks, Texas College was accredited as a Class A Junior College in 1924 by the State Board of College Examiners of the State Department of Education. The hall was damaged in 2015 and required a major renovation. The completion of the renovation has led to the development of a state-of-the-art facility which now serves as the institution’s main administration facility.

**Collaboration with The University of Texas at Tyler:** Texas College and the University of Texas at Tyler entered into a partnership that will provide research and transfer opportunities for students. The signed Memorandum of Understanding includes a 2+2 agreement, which provides pathways for Texas College students to transfer into select undergraduate program at UT-Tyler and a 4+1 agreement, which provides opportunities for students to enroll in select master’s programs at UT-Tyler.





# Friends of the College

**A-**  
Mrs. Billye S. Aaron  
Ms. Annette Adamcik  
Ms. Carole L. Adams  
Aesthetic Photography Inc.  
Mrs. Stephanie Akon  
Ms. S.E. Alexander  
Aladdin Food Management  
Services LLC  
Ms. Gwendolen A. Allen  
Alpha Phi Alpha Fraternity  
Alpha Tau Alums & Friends  
American Honda Motor  
Company, Inc.  
Mr. Clinton Anderson  
Mr. Evance Anderson  
Ms. Sandra Fails Aziz  
**-B-**  
Baptist Ministers Conference  
Barbara and Billy Bass  
Charitable Fund  
Mr. Joe Bayonne  
Mr. Garon Bell  
Ms. Jessie B. Bell  
Benjamin Franklin Plumbing  
Dr. Lou Ann Berman  
Dr. Elaine Berry  
Dr. Bobby Best  
Ms. Alice Booker  
Ms. Asjah Boyd  
Mr. & Mrs. Terry & Gail  
Bradley  
Ms. Diane Bridgeman Howard  
Brookshire Grocery Company  
Ms. Tiffany Brown  
Ms. Cynthia Brown  
Mr. Arthur L. Bryan  
Mr. & Mrs. Herbert & Melvina  
Buie  
Ms. Sheron Burgess  
Burton Hotel Group of Tyler  
Mr. Randy Butler  
BWC Consulting LLC  
**-C-**  
Mr. Chad Cargile  
Mr. Ralph F. Carter  
Ms. Beverly Carter  
Central Texas Conference  
Missionaries CME  
Dr. & Mrs. Willie C. Champion  
Ms. Patricia Chargois  
Ms. LaJoi S. Charlot  
Ms. Bridget W. Chisholm  
Mr. Elmer Chisholm  
Christus Trinity Mother Frances  
Health System  
City of Tyler  
Dr. Emma J. Clark  
Ms. Cherry L. Clay  
Ms. Doris Collins  
Mrs. Gwendolyn Collins  
Community Health Clinics NE  
Texas  
Ms. Hazel Cook

Mrs. Shirlene Shields Cook  
Mr. Michael Cornwell  
Ms. Ronna Coward  
Ms. Ethel J. Crawford  
Dr. Carmichael D. Crutchfield  
Mr. Thelvie Cullins  
Mr. Nelson I. Cummings, Jr.  
Ms. Joyce Curtis  
**D-**  
Mrs. Fannie L. Davis  
DFW/NW Texas Region Women's  
Missionary CME  
Mrs. Clara Dickerson  
Elder Henry Q. Dickerson  
Dissinger Reed  
Ms. Ruby Dorough  
Sigma Sigma Chapter Double Sig  
Omega Psi Phi Fraternity  
Mr. Lowell O. Dunn  
Mr. & Mrs. Charles & Verna  
Durden  
**-E-**  
East Texas Chapter of The Links  
Incorporated  
East Texas Region -Missionary  
Society CME  
Mr. Albert Edwards  
Ms. Gwendolyn Edwards  
Eighth Episcopal District CME  
Church  
Mr. Gregg Ellis  
Empire Paper Company  
Ms. Annie Erving  
**-F-**  
Mrs. Fannie A. Fair  
Dr. Dwight J. Fennell  
Mrs. Angelia Fennell  
Ms. Marsha Fennell Harris  
Mr. Rickey C. Fontenot  
Mr. Milford A. Fontenot  
Mr. Kenneth W. Fontenot  
Ms. Fran Fontenot  
Mr. Wilrey Fontenot, Jr.  
M.J. Forney  
Mr. Dowd Fowler III  
**-G-**  
George Garrett  
1SG David G. Garrett  
Bishop Marshall Gilmore  
(Retired)  
Ms. Mamie Gilyard  
Ms. Julia S. Gooden  
Ms. Marilyn M. Graham  
Ms. Charlotte D. Graves  
Ms. Mary K. Green  
Ms. Yolanda Green  
Mrs. Tredis G. Griffin  
Ms. Debbie J. Griffin  
Mr. & Mrs. Luther & Hazel Groce  
Dr. Mamta Gupta  
**-H-**  
Mr. & Mrs. Wilburt & Helen Hall  
Mr. James Harris  
Rev. Geraldine Harrison

Mrs. Billie Hartley  
Ms. Odessa D. Haugabrook  
Ms. Doris Heiskell  
Mr. Billye Henderson  
Ms. Juanita Henry  
Mr. Charles Henry  
Mrs. Linda Simmons Henry  
Mr. Spencer Hervey  
Mr. Charles Hill  
Ms. Ann S. Holly  
Ms. Veta Holt  
Ms. Suddie Houston  
TCNAA - Houston Chapter  
Houston District Lay Dept. -  
CME Church  
Hughes Chapel CME Church  
**I-**  
Dr. Alexei Iakhiaev  
Dr. d'Andra Isaacs  
Dr. Masie V. Isabell Greene  
**-J-**  
Jarvis Christian College  
Ms. Flossie M. Jasper  
Dr. Sebetha Jenkins-Booker  
Mr. Charles W. Johnson  
Mr. Larry Johnson  
Ms. Norma Johnson  
Ms. Winifred G. Johnson  
Ms. Linda Johnson  
Mr. Billy Johnson  
Dr. Cindy Johnson  
Mr. Ernest Johnson, Jr.  
Dr. Patricia Johnson-Evans  
Mr. Robert Jones  
Ms. Dorothy Jones  
Ms. Rachel P. Jones  
Mr. Thomas Joyner  
**-K-**  
Ms. Birdena A. Kendrick  
Ms. Carlene King  
Krimson Kourts Inc.  
Kroger Grocery Stores  
**L**  
Ms. Esther F. Lawson  
Ms. Alice J. Leonard  
Ms. Freda J. Lewis  
Mr. Paul L. Lewis  
Mrs. Cuvia R. Lewis  
Mr. Wallie H. Lewis  
Ms. Crystal Lewis  
Lewis Chapel CME Church  
Mr. Brian Troy Lightner  
Linebarger Goggins Blair &  
Sampson LLP  
Ms. Josephine Lipscomb  
Longridge Christian Methodist  
Episcopal Church  
**-M-**  
Mrs. Cynthia Marshall Biggins  
Ms. Roberta Mason  
Dr. Orenthia Mason  
Chaplain Ella M. McCarroll  
Ms. Yolanda F. McClain  
Dr. Leon R. McCowan

Mr. & Mrs. Mike & Carolyn McCrary  
Mr. Ronald McDowell  
Mr. Ezeal McGill  
Mr. Timothy McKay  
Dr. Shirley J. McKellar  
Dr. Patricia McKenzie  
Ms. Angela McMorris Hawkins  
Mrs. Elizabeth McNally  
Methodist St. John Hospital  
Dr. Michael A. Monmouth  
Mr. Dennis Monmouth  
Ms. Rose Monmouth  
Mr. Wilmer Monmouth, Jr.  
Rev. Nakomus Morris  
Nakomus & Harold Morris  
Mr. Walter Mosley  
Mr. James Moton  
Mt. Nevelton CME Church  
Mt. Olive Baptist Church  
Mt. Zion CME Church  
Ms. Laura Muckelroy  
N  
Ms. Sandra A. Nauls-Mast  
Mr. Cortelius Nelson  
Dr. Emmanuel N. Ngwang  
**-O-**  
Mr. Charlie Oliver  
Oncor  
Mr. & Mrs. Godwin Osuagwu  
**-P-**  
Mr. William Parker, Jr.  
Ms. Jacquelyn Peel  
Phi Beta Sigma Fraternity/Zeta  
Phi Beta Sorority  
Ms. Toni Phillips  
Mrs. Patrina Pinkerton  
Pleasant Grove Baptist Church  
Post Oak CME Church  
M. Powell  
Progressive Casualty  
Insurance Company  
**-R-**  
Bishop Lawrence L. Reddick, III  
Regions Bank  
Mr. Earl Riggs  
Mrs. Telesta Riggs  
Mrs. Shirley A. Roberson  
Attorney Clifton L. Roberson  
Mr. Edward Robinson  
Dr. Annie Grace Robinson  
Rose Picker Music  
**-S-**  
Ms. Barbara Sanders  
Mr. Kenneth A. Saunders  
Scotts Memorial CME Church  
Sheeler Memorial CME Church

Mr. Charlie B. Shepherd  
Sigma Gamma Rho Sorority Nat'l  
Educ. Fund  
Sisterhood of H.O.P.E.  
Mrs. Helen M. Slater  
Mr. Kevin D. Smith  
Mr. Bernard Snowden  
Sonja Strayhand Design Group  
Southeast Texas Conference CME  
Church  
Southside Bank  
Ms. Bessie M. Starling  
Mrs. Arkalio Stein  
Mrs. Babe Ruth Stokes  
Ms. Sonja Strayhand  
Mr. Walter R. Strickland  
Mrs. Johnnie L. Stripling  
**T-**  
TADC Urban Scholarship Fund  
TCNAA - Houston Chapter  
TCNAA - Dennis Rice  
TCNAA - Longview-Gregg County  
Chapter  
TCNAA - Shirlene Cook  
TCNAA - South Florida/PBC  
TCNAA - Tyler Chapter  
Mr. & Mrs. Barry B. & Marsha C.  
Telford  
Texas Bank and Trust  
Texas College  
TCNAA Texas College - Dallas  
Alumni Chapter  
The Hoeffner Foundation  
The Library Club - Texas College  
The Tom Joyner Foundation, Inc.  
Mr. Roosevelt Thomas, Jr.  
Ms. Ester Timms  
Ms. Jacqueline Tolbert  
Ms. Dorothy J. Turner  
Ms. Gladys Turner  
Tyler Chapter – TCNAA - Ida M.  
Robinson  
Tyler Communications Systems Inc.  
Cynergy Technologies  
Tyler Independent School District  
Tyler Junior College  
**-U-**  
Union Grove M.B. Church  
Mr. Doyal A. Upshaw  
Uptown Heating & Air Conditioning  
Dr. Kenneth Usongo  
UT Health Center at Tyler  
UT Health East Texas  
UT-Tyler  
**-W-**  
Mr. Frederick Waddell  
Atty. Valita Waits  
Ms. Kimberly D. Walker  
Ms. Lavada B. Walker  
Ms. Kimberly D. Walker  
Mrs. Virginia R. Ward  
Watersbluff CME Church  
Watson W. Wise Foundation

Mrs. Cheryl Lynn Way  
Wesley Peachtree GRP CPAS  
Mrs. P.L. Whitaker  
Mrs. Sarah D. Wilborn  
Ms. Marilyn M. Williams  
Ms. Denise Williams  
Mr. Harold L. Williams  
Mr. Lucious Williams  
Mr. George L. Williams III  
Mrs. Lizzie Willis  
Mr. Harold L. Williams  
Mr. Lucious Williams  
Mr. George L. Williams III  
Women's Missionary Society CME  
Women's Missionary Society SE  
Texas CME  
Arto S. Woods  
Miss Linda Woolage  
**-Z-**  
Ms. Margaret Zabawar

